



**PROGRESSIVE**  
MATERIALS

---

**PREMIUM COATING SYSTEMS**

# **SILICONE ROOF COATING RESTORATION**



[pmsilicone.com](http://pmsilicone.com)



---

# Table of Contents

<b>ABOUT US .....</b>	<b>3</b>
<b>RCR SYSTEM.....</b>	<b>4-5</b>
<b>ENERGY SAVINGS WITH SILICONE.....</b>	<b>6-7</b>
<b>RCR OVER METAL .....</b>	<b>8-9</b>
<b>RCR OVER GRAVEL BUR .....</b>	<b>10-11</b>
<b>PRO-GRIP WALKWAY SYSTEM .....</b>	<b>12-13</b>
<b>RETAIL GIANT ENJOYS BENEFITS OF RCR SYSTEM .....</b>	<b>14-15</b>
<b>PROTECTING THE HOOSIER GYM.....</b>	<b>16-17</b>
<b>PREVENTING DAMAGE TO INVENTORY .....</b>	<b>18-19</b>
<b>CONTRACTOR MARVELS AT FIRST USE.....</b>	<b>20-21</b>
<b>SILICONE VS. ACRYLIC .....</b>	<b>22</b>
<b>COLOR CHART .....</b>	<b>23</b>
<b>PRODUCT LIST .....</b>	<b>BACK COVER</b>



# About Us

We are Progressive Materials. The first thing you should know about us is that we are a family-owned and operated business. Honesty, integrity, and loyalty are some of the most important traits to everyone in our company. We know we wouldn't be where we are today without our customers, and we try to treat all our customers the way we want to be treated.



The second thing you should know about us is that we have over 40 years of experience in the silicone roof coatings market. Of all the silicone manufacturers operating today, you won't find another with more practical experience than we have. We strive to promote green, environmentally-friendly roofing practices, which is why we've been such a big fan of silicone restorations for so long.

Our mission is to be the premier roofing systems manufacturer through superior customer support, expert technical knowledge, and a strong commitment to product performance.

Thank you for your interest in Progressive Materials. We will always do our best to treat you like family and make sure you're completely satisfied with everything we do for you.





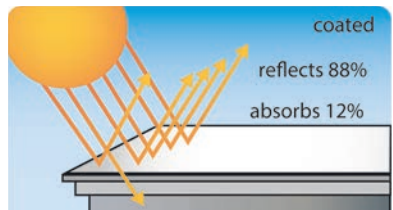
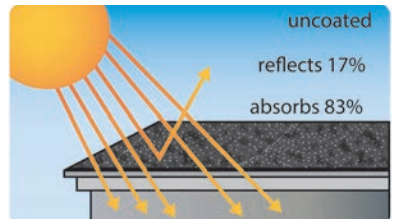
## SILICONE ROOF COATING RESTORATION (RCR) SYSTEM REMARKABLE COST SAVINGS FOR ANY SIZE PROJECT

### The Sustainable Option:

The Silicone Roof Coating Restoration (RCR) system works with your existing roofing system to repair, restore, and maintain a leak-free roof. This superior system is backed by a warranty up to 20 years. The hundreds of millions of square feet of single ply, metal and asphalt based roofs installed in the last few decades now have long-term renewal options.

### ENGINEERED TO BE THE BEST OPTION AVAILABLE

- Eliminates the use of primers, in most instances, providing superior coating adhesion
- Extends the life of your existing roof: concrete, modified bitumen, single-ply, metal roof panel, and smooth BUR
- Significantly lowers labor and materials costs
- Seamless systems reduce your ongoing maintenance costs
- Withstands ponding water





## Sustainability and Simplicity

### SILICONE ROOF COATING

**Pro Eco Sil HS 3200 Series** High Solids, Low VOC Silicone Roof Coating is our “green,” one-component, moisture-curing silicone roof coating system. The HS 3200 Series is available in white, tan, light gray, and dark gray. Custom colors are available upon request.

### TRUE SUSTAINABILITY

- System application eliminates the need for tear-off and disposal
- Eliminates landfill waste
- Keeps the building interior safe from the elements during re-roofing
- Lower toxic emissions during installation
- Reduces energy costs by reflecting sunlight and radiant heat – keeping the roof surface cooler

### THE RCR SYSTEM

#### SCOPE OF WORK:

- Repair membrane & seam deviations
- Prepare & power-wash roof surface
- Apply Pro-Eco Sil HS 3200 silicone coating

Contact Progressive Materials for more detailed specifications on our roofing systems and to find a certified contractor near you.



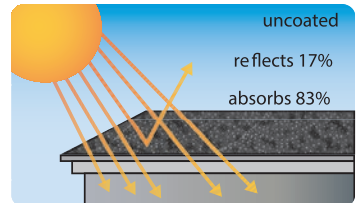
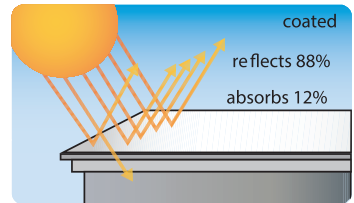


## THE ENVIRONMENTALLY-FRIENDLY ROOFING SYSTEM LOWER ROOF TEMPERATURE AND ENERGY CONSUMPTION

### White is the New Green:

The Silicone Roof Coating Restoration (RCR) System from Progressive Materials provides some of the most robust energy savings of any system on the market. Other systems require new insulation or a completely new roof system to provide energy savings, but our Silicone RCR system provides these benefits utilizing the roof structure already in place.

Once applied, our Silicone RCR system reflects up to 88% of the sun's rays. This reflectivity lowers both the roof temperature and the interior building temperature, reducing your energy consumption and keeping your building occupants more comfortable.



### COOLER ROOF, COOLER BUILDING

Thanks to its extremely reflective surface, silicone roof coatings can significantly decrease the surface temperature of your roof. Several studies have shown that a white silicone roof coating can decrease the temperature of your roof by 50-60°.

On a 95 degree day, a conventional roof can get as hot as 160 degrees. Meanwhile, a white roof will stay around 100 degrees, barely hotter than the air. This helps to keep your building more comfortable and allows for service and repairs during the hot summer months.



## Reducing Energy Consumption

### KEEPING YOUR BUILDING COOLER, NATURALLY

No one wants to work in a building that is too hot. A silicone roof coating can cool your building down without the use of your AC unit. Studies have shown that the reflectivity of a white silicone roof coating can provide significant savings for building owners:

*"A California study found that cool roofs provide an average yearly net savings of almost \$.50 per square foot"*

-Environmental Protection Agency (EPA)

*"The California Energy Commission has concluded reflective roofs can reduce a building's energy use by 20% and save consumers money."*

- California Energy Commission

### EASIER ON HVAC SYSTEMS

A roof that is cooler translates to a building that is cooler. By keeping your building cooler, you can reduce the load put on your HVAC equipment. This saves money in the short run by reducing energy consumption, but also saves money in the long run by extending the life and performance of your HVAC equipment. Your cold air will be colder and your hot air will be hotter, for less money and for longer.

### SILICONE ROOF COATINGS BY THE NUMBERS

**88%**

The amount of UV rays reflected by a silicone roof coating, compared with 17% reflected by traditional roofing systems.

**60°**

The number of degrees cooler that a silicone coated roof will be than a traditional roofing system on the hottest days.

**\$.50**

The amount of money you can save per square foot when you install a silicone roof coating on your building.

**20%**

The amount you can reduce your building's energy usage when you install a silicone roof coating on your building.





## ROOF COATING RESTORATION OVER METAL IMPROVE PERFORMANCE, EXTEND ROOF LIFE

### The Simple, Sustainable Repair:

Many metal roofs never last their expected lifespan because building owners grow tired of dumping money into constant repairs that never seem to work.

#### THE REPAIR TO END ALL REPAIRS

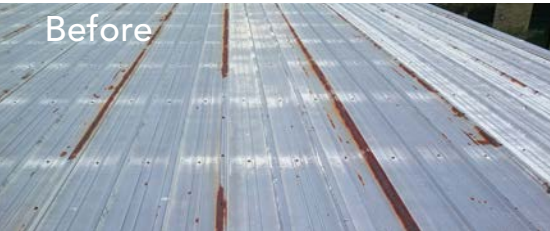
A Silicone Roof Coating Restoration (RCR) from Progressive Materials is the optimal solution to a leak-prone metal roof. By applying a thin layer of silicone directly to the metal roof surface, you can eliminate leaks and repairs for up to 20 years. Our RCR completely seals seams, fasteners and penetrations and effectively eliminates the risk of leaks at these common weak points.

#### METAL ROOF CONCERNS:

- Seams often lead to leaks
- Fasteners backout, allow heat loss, and can leak
- Roof expands and contracts with temperature swings
- Rust leads to roof failure
- Flashings deteriorate and leak

#### RCR SOLUTIONS:

- 100% seamless means no leaks
- Completely encapsulates fasteners
- Elasticity ensures no gaps in roof surface
- Stops current and prevents future rusting
- Silicone is self-flashing



## RCR Over Metal (continued)

### RCR SCOPE OF WORK

- Repair metal, seam, fastener, and flashing deviations
- Prepare & power-wash roof surface
- Apply PM P-130 Rust Primer to any rust spots
- Apply Pro-Eco Sil HS 3201 silicone coating in two coats

### ENGINEERED FOR SUSTAINABILITY

- System application eliminates the need for tear-off and disposal
- Eliminates landfill waste
- Keeps the building interior safe from the elements during re-roofing
- Lower toxic emissions during installation
- Reduces energy costs by reflecting sunlight and radiant heat – keeping the roof surface cooler

We also offer a translucent silicone coating for use on fiberglass skylights.

Contact Progressive Materials for more detailed specifications on our roofing systems and to find a certified contractor near you.





## ROOF COATING RESTORATION (RCR) OVER GRAVEL BUR SURFACE LEVELING COATING FOR A SMOOTH ROOF SURFACE

### Affordable Roof Restoration:

Restoring your roof with a silicone coating is the most affordable way to extend your roof's life. But for a roof to be properly coated and restored, it needs to be relatively smooth. Gravel built-up roofs (BUR) are difficult to properly coat due to their rough, uneven surface. Attempts to coat a BUR solely with coating typically result in an expensive job due to the excessive coating required, or results in a roof failure due to not applying the appropriate amount of coating. Our Pro-Level SL 800 Surface Leveling Coating allows gravel BUR to be restored at an attractive price tag, because it levels the surface and allows the use of less roof coating while providing a long-term, high performance solution.

### GRAVEL BUR OBSTACLES

Prior to the introduction of our surface leveling silicone coating, the only option to restore an old gravel surface BUR was to use an asphalt emulsion type product. This product is difficult to apply, very messy and only performs for a short amount of time. There was never a good roof restoration solution that would provide a long-term fix for a reasonable cost. Gravel BUR roofs are simply too rough and uneven to be affordably restored with a silicone roof coating alone. Though our silicone coating can be installed directly over the existing roof, it would have to be applied at such a thick rate that it is cost prohibitive.

### SOLUTION

PM has developed a self-leveling silicone (SL 800), that is specially formulated to be less expensive than our roof coating, meaning the project cost can stay down while still properly restoring uneven roof surfaces. SL 800 costs less than our roof coating and allows you to use less roof coating, saving you money.

### Coverage:

SL 800 is designed to be more free-flowing than our roof coating, allowing it to migrate to the low parts of the roof and fill every crack and crevice. This complete coverage allows for a smooth surface and proper waterproofing performance.

## SCOPE OF WORK

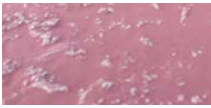
- Inspect existing roof system
- Remove all loose gravel
- Powerwash roof surface
- Survey moisture and replace wet material
- Repair damaged flashings / sheet metal
- Apply P-160 Bleed-Block Primer
- Apply SL 800 Surface Leveling Coating
- Apply HS 3200 Silicone Roof Coating
- Inspect roof to ensure compliance with PM specifications

## COST SAVINGS

The silicone RCR system provides long-term performance at a lower cost than a roof replacement and it is also non-disruptive to the facility, eliminating the potential disruption of operations. The silicone RCR system is also installed much faster than roof replacement.

## SUSTAINABILITY & ENVIRONMENTAL BENEFITS

The PM Silicone RCR system resists chalking, withstands ponding water and is UV stable. But the best part of all is that at the end of the service life, it can be coated again and get a new water tight warranty. This system eliminates unnecessary waste going to the landfill from a new roof installation, utilizes the existing good insulation and can provide a white reflective roof surface to keep the building cooler.



SL 800 Surface Leveling Coating does not create a perfectly level surface – and it is not designed to – but it creates a much smoother surface to which our roof coating can be properly applied.



1. Original Gravel BUR roof surface



2. Remove loose rock



3. Apply P-160 Bleed-Block Primer (optional)



4. Apply SL 800 Surface Leveling Coating



5. Apply HS 3200 Silicone Roof Coating



6. Apply Pro-Grip Walkway System (optional)



## PRO-GRIP WALKWAY SYSTEM

ABRASION RESISTANCE, NON-SKID SURFACE, UV RESISTANCE

## Increase Your Roof's Durability:

Excessive foot traffic, dropping tools and general wear and tear can all result in significant damage to your roof and decrease its overall performance. That is why we developed the Pro-Grip Walkway System, designed to both enhance the abrasion resistance of your roof surface while also providing a non-skid walking surface.

### **SIMPLY THE BEST SOLUTION**

There are many other systems designed to protect your roof, but they all share the same problems: none of them are as simple as ours and they don't last for the duration of the warranty period.

Other systems often involve reinforcing your roof surface or installing a protective deck, both of which are complicated, time-consuming, and expensive. Our system, however, is made up of only two parts, can be installed in only four simple steps, can be completed in a day, and will last as long as the warranty on your roof does. That is why our system is the best choice for increasing your roof's durability: it is extremely simple and effective.



## Pro-Grip Walkway System (continued)

### THE EFFECTIVE, EFFICIENT WALKWAY SYSTEM

#### Pro-Grip 700 Walkway Coating:

The first part of our walkway system - Pro-Grip 700 Walkway Coating - is a 100% silicone coating that is very similar to our other silicone coatings. The differences are its bright color and special high-build formulation. The high-build formulation permits thicker installation in a single application.

#### Pro-Grip 750 Walkway Granules:

The second half of our system is PG 750 Walkway Granules. They are essentially tiny rocks that have been given a bright yellow color to match the PG 700 Walkway Coating. Once installed, the granules provide a rigid, flat surface that increases the roof's abrasion resistance, provides a non-skid surface for all workers and improves the UV resistance of the roof surface.

### INSTALLED IN A DAY

Our walkway system is installed using these 4 simple steps:

- Roll-apply the PG 700 Walkway Coating over the desired walkway area.
- Generously broadcast PG 750 Walkway Granules within a few minutes of coating application.
- Inspect the walkway surface a few minutes after granule application and re-apply as needed to obtain a continuous film of granules.
- Once the coating has cured, remove all loose granules.

### THE VERSATILITY YOU'VE COME TO EXPECT

Our walkway system can provide many different surfaces with a rigid, durable, and effective walkway system, including:

- PVC, TPO, EPDM, Hypalon, Metal, Spray Foam, Silicone

Contact Progressive Materials for more detailed specifications on our roofing systems and to find a certified contractor near you.





## RETAIL GIANT ENJOYS BENEFITS OF SILICONE RCR ROOF SYSTEM

Atlanta, Georgia

### Project Profile

#### HISTORY

A national retail giant with over 20,000,000 square feet of roof at their various distribution facilities across the US, has partnered with Progressive Materials to find a cost effective, high performance roofing system.

Now, after 5 years and over 4,000,000 square feet successfully installed at a fraction of the cost of a roof replacement, they exclusively install the Silicone RCR System on all of their existing single ply PVC, TPO, Hypalon & metal roof panels.

#### PROBLEM

Every time it rained at their 2,000,000 square foot Georgia distribution facility, the retailer was faced with 50 to 60 leaks in the 12 year old PVC roof system. With millions of dollars worth of product inside the building, they could not tolerate the leaks any longer.



## Project Profile (continued)

The Progressive Materials Silicone RCR Roof System allowed this national retailer to perform more work on their roof while spending fewer dollars. Maximizing their roofing budget is of upmost importance given the size of their real estate portfolio, and the RCR System was the most effective way for them to do this.

## SOLUTION

Our cost effective solution allowed them to complete the project for less than ½ the cost of a roof replacement. The project engineer for the owner states, "We truly love this system. We are able to do more roofing projects for the same dollars, which makes our life a lot easier. Not only are we saving money, we are adding to our corporate mission of making responsible environmental decisions, which is very important to our company."

## SCOPE OF WORK

- Power-washed roof surface
- Locate existing wet areas with infrared roof scan
- Remove and replace all wet insulation
- Treat all deficient seams and flashings
- Installed 30 mils of HS 3201 solvent-free silicone roof coating

## BENEFITS

The new roofing system installed at the distribution center provided an enormous benefit to the retailer:

- Substantial cost savings
- 15 year Manufacturers Warranty
- Reduced energy costs due to reflective surface
- No down-time for the center
- Low environmental impact
- Low on-going maintenance



## PROTECTING THE HOOSIER GYM PRESERVING A STATE TREASURE

Knightsstown, IN

# Project Profile

## HISTORY

In 1986, the film Hoosiers was released in 1986. Hoosiers, dubbed by ESPN and Sports Illustrated as the greatest sports movie of all time, filmed in a historic gym in Knightstown, IN. This Knightstown gym was built in 1921 and expanded in 1936, but has been untouched since the filming of Hoosiers. Anyone who visits Knightstown today can still see the locker rooms where Gene Hackman rallied the team, the clothes the players wore, and can walk on the court where Jimmy made that final shot. With so much history behind it, the gym was renamed "The Hoosier Gym", and now hosts weddings, receptions, political events, commercial shoots, and more. A state treasure like this has to be preserved, so the risk of water damage to the floor was a major concern.

## PROBLEM

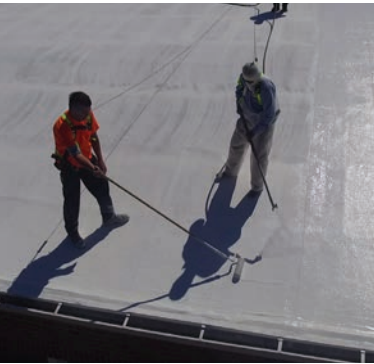
Gym operators began to notice that several spots in the roof were leaking. The risk of water damage to the iconic gym floor meant the roof needed to be fixed immediately.

## SOLUTION

The operators of the Hoosier Gym knew that a complete roof replacement was out of the question due to budget constraints, so they elected the Silicone Roof Coating Restoration (RCR) system from Progressive Materials (PM).

A silicone restoration would be effective and affordable.

The gym had an 8,700 square foot Modified Bitumen roof. The silicone coating could be applied directly to the roof with no primer needed, would require only two thin coats, and would provide a seamless roofing membrane over top of the existing roof. The silicone RCR system was the fastest and most affordable solution available to The Hoosier Gym, and was applied in just three days.



## Project Profile (continued)

The roof was coated using a combination of spraying and rolling the coating to ensure all seams and crevices were completely filled and sealed. This also allowed the contractor to ensure the coating was applied at the correct thickness.

### SCOPE OF WORK

- Installed anchors at the peak of the roof to tie off workers and ensure safety while working.
- Power washed the Modified Bitumen roof to remove all dirt and grease stains.
- Applied an extra layer of silicone coating to any damaged seams to ensure no leaks would appear.
- Coated the field of the roof with two coats of 100% silicone coating.

### BENEFITS

The greatest benefit for The Hoosier Gym on this project was the affordability of a quality roof system. The gym operates almost entirely on donations, so they needed an option that wouldn't exhaust their budget for the year.

- The coating created a seamless membrane on the roof that is designed to stop leaks and prevent future leaks, protecting the gym floor.

Bob Garner, a volunteer who helps run The Hoosier Gym, said they were able to use the money they saved by avoiding a complete roof replacement to replace the AC units in the gym that were failing. We were proud to provide an innovative solution that saved this iconic facility money, and will keep the gym floor safe for years to come.



## SMALL BUSINESS PREVENTS DAMAGE TO INVENTORY

THE POOL MAN, INC  
Clarksville, Indiana

### Project Profile

#### HISTORY

The Pool Man, Inc. has been serving the Kentuckiana area since 1998. They own a single retail store in Clarksville, IN and recently purchased a building across the street to warehouse out of season and overstocked items.

#### PROBLEM

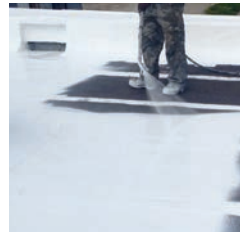
When the first major rain hit after they purchased the new building, the owners of The Pool Man realized they had a problem on their hands – a leaking roof in their fully stocked warehouse. They had already moved all of their overstocked items into this building and were now at risk of damaging and losing thousands of dollars' worth of inventory. The Pool Man needed a rapid solution.

#### SOLUTION

The Pool Man elected to use the silicone RCR system from Progressive Materials (PM) be utilized for the project. The new building had a smooth built-up roof, which was a perfect candidate for the Silicone RCR system from PM. The 100% silicone coating could be applied directly to the roof with no primer needed. The system would only require a single coat, and would provide a monolithic membrane covering the existing roof. The silicone RCR system was applied in a single day.



The previous roofing system, a smooth-surface built-up roof, had severe wear and tear around all protrusions and building edges. These areas were treated with a three-course silicone system that consisted of coating-fabric-coating to ensure a water-tight seal.



## Project Profile (continued)

All protrusions in the roof were treated with a three-course silicone system that consisted of coating-fabric-coating and received coating on the entire fixture. This ensured a watertight seal where the old system was vulnerable to leaks.

Seams in the roofing system received an extra coating of silicone coating prior to coating the field of the roof. The seams are the most leak-prone areas of any roof, so the extra step was necessary for a watertight system.

### SCOPE OF WORK

- Power washed the smooth surface built-up roof to remove all dirt and grease stains.
- Any damaged areas and lap seams were fixed using a 3 course coating-fabric-coating system.
- Protrusions in the roof surface such as vents also received the 3 course system.
- Coated the field of the roof with 100% silicone coating once lap seams and protrusions had dried.

### BENEFITS

The greatest benefit realized by The Pool Man on this project was the quick turnaround. From the time the leaks were discovered to the time the job was completed, no products were damaged. Other benefits of the coating are:

- The RCR system was completed for a fraction of the cost of a complete roof replacement.
- The silicone RCR system only required one coat.
- The coating created a seamless membrane that will resist ponding water and prevent leaks.
- Reduced energy costs as the reflective properties of the white coating do not absorb the sun's heat, but reflect it.
- The system is renewable, and can be replaced in 10-15 years by simply applying another layer of coating.
- Meaning minimal repairs and maintenance expenses for The Pool Man.

Lisa Kane, part owner and manager of The Pool Man, Inc., had this to say about the experience of working with Progressive Materials': "It was all fabulous. The material looks great and we have no more leaks, compared with six or seven leaks before the install.



## CONTRACTOR MARVELS AT FIRST USE OF SILICONE RESTORATION SYSTEM

Lynnwood, Washington

## Project Profile

### HISTORY

The Alderwood Mall, located in Lynnwood, WA is one of the Puget Sound's largest shopping malls. The complex is comprised of both a traditional enclosed mall and two open-air areas known as The Village and The Terraces. The mall includes several anchor stores, including a Macy's store.

### PROBLEM

The Macy's existing roofing system was approximately 20 years old. Areas of blistering and significant granule loss from the cap sheet were apparent. Roof leaks were reported in the building and a thermal imaging of the roof showed wet areas in the system. Any significant rainfall resulted in leaks and the need to relocate merchandise.

### SOLUTION

Cool Roofing Systems (CRS) was the contractor hired to restore 18,328 square feet of the leaking roof. By using Progressive's HS 3201 silicone roof coating restoration system (RCR) they were able to repair the roof without a complete tear-off.



## Project Profile (continued)

The Macy's roof in Lynnwood, Washington showed severe signs of deterioration and water damage. After patching and repair work was completed, the Silicone RCR process provided a waterproof, sustainable system that pleased Macy's facility management. Ronald R. Lagman, Regional Project Manager for Macy's asserted; "Progressive Materials products have far exceeded my expectations... and was a great solution for our roof applications, stopping many hard to repair leaks. The spray on application was applied much quicker than our re-roofs, and was less of an impact to Macy's business. We look forward to continuing to partner with Progressive Materials on further projects."

## SCOPE OF WORK

- Power wash the existing BUR roofing system.
- Damaged areas were 3-coursed with silicone and polyester reinforcement.
- All wet areas were removed and replaced.
- All laps were sealed with 25 mils of silicone coating.
- Entire roof surface received 40 mils of silicone coating.

## BENEFITS

Not only were there benefits to the retail establishment regarding the lower cost of repair and the superior roof coating, but the contractor themselves realized several benefits from choosing the Silicone RCR process. Historically, CRS' crews worked primarily with spray acrylic systems. They were not anticipating the ease of spraying the Progressive Materials product. Roof coating applications require finesse to satisfy engineering and warranty requirements.

The staff at Progressive Materials made themselves available to answer questions, inspect and offer guidance and technical insight to ensure a successful project. Macy's new roof is now a seamless, watertight silicone membrane that will keep the building interior dry. The white reflective surface offers energy savings and lower temperatures during hot summer months. In addition, the new system now maintains a 15 year leak-free warranty.



## SOLVENT FREE SILICONE RCR SUPERIOR TO ACRYLIC ROOF COATINGS

### Superior Performance

You'll save time and money by choosing Progressive Materials' Silicone RCR roofing system over an acrylic roof coating.

#### SINGLE COAT APPLICATION

- 40% Higher Solids Content
- High-build capacity (40+mils in one coat)

#### SIGNIFICANTLY LOWER LABOR COSTS

- In most cases, no primer coat is needed
- Single coat application
- Less reinforcement needed

#### SAFE FOR THE ENVIRONMENT

- Solvent Free Low VOC

#### SUPERIOR UV STABILITY & PERFORMANCE

- Silicone based
- Maintains adhesion under moderate ponding water
- Will not chalk, degrade or haze from UV exposure

#### EASY TO USE

- Faster cure time
- Moisture cure product (humidity is a plus)
- Fully cures even in cooler temperatures
- No risk of wash-off





**SILICONE ROOF COATINGS  
STANDARD AND PREMIUM COLORS**

**STANDARD COLORS**



White  
LS2201/HS3201



Tan  
LS2202/HS3202



Light Gray  
LS2203/HS3203



Dark Gray  
LS2204/HS3204

**PREMIUM COLORS**



Hunter Green  
LS2205/HS3205



Barn Red  
LS2206/HS3206



Colonial Red  
LS2207/HS3207



Black  
LS2208/HS3208



Dark Brown  
LS2209/HS3209



Regal Blue  
LS2210/HS3210



Slate Blue  
LS2211/HS3211



Burnt Orange  
LS2212/HS3212

*All Premium Colors will require a longer lead time, minimum order quantities and special pricing for each color. Pre-negotiated pricing applies only to Standard Colors. Please check with your PM sales rep for further information.*

*Though every effort is made to maintain color consistency from batch to batch, there may be slight color variations. In addition, gloss and color may vary due to weather conditions, application technique and substrate texture.*



# PREMIUM COATING SYSTEMS

**ASK ABOUT OUR FULL LINE OF SILICONE  
PRODUCTS AND ACCESSORIES!**

## **Primers**

Single-Ply Primer  
Bleed-Block Primer  
SPF Primer/Night Seal  
EPDM Bleed-Block  
EPDM Rinseable Cleaner  
Rust Inhibitive Primer

## **Coatings**

High Solids Silicone Coating  
High Build Silicone Coating  
Standard Solids Silicone Coating  
Clear Silicone Skylight Coating  
Metallic Silicone Coating  
Pro-Patch Flashing Grade Silicone  
Pro-Grip Walkway System  
Pro-Shield Fully-Reinforced System

## **Accessories**

Silicone Sealant (Caulk)  
Mesh Fabric  
Butyl Fleece Tape  
Moisture Relief Vent

**Progressive Materials**

[pmsilicone.com](http://pmsilicone.com) | p 812.944.7803 | f 812.944.7804